



SAINT LUKE'S

The Fourth Sunday After Pentecost
17 June 2018 at 10:30 am

Mission

We gather to worship, witness, learn, grow, and serve, creating Jesus' embrace through outreach, arts, educational programs and the sanctuary of our church and gardens.

Vision

We joyfully join the Holy Spirit to transform this world into the kingdom of God, celebrating the diversity and dignity of all creation, connecting people to each other and to the Divine.

Values

We set scripture, prayer and sacraments at the center of our communal life.

We practice inclusive hospitality, valuing diverse experiences and contributions from our parish, our neighbors, and the wider community.

We honor our progressive Anglo-Catholic heritage through our service at the altar and our service to those in need.

We strive to be good stewards of the resources God has given us, giving our highest and best to God in all that we do.

The Holy Eucharist

Please refrain from bringing food or drink (except if for young children) into the church during Mass.

Please silence all mobile phones and electronic devices.

People often wish to take the time before and after worship for silent prayer. Please be considerate of your fellow worshippers by refraining from conversations before Mass and applause at the end of the postlude. Thank you very much for your thoughtfulness.

Child-care is available for children under age 6; please ask an usher for directions; all children are welcome in worship, and we encourage parents to bring children to communion.

Hymn numbers refer to the Hymnal 1982 (numbers with an S-prefix may be found in the Service Music section at the front of the Hymnal), Lift Every Voice and Sing II and Wonder, Love, and Praise.

PRELUDE *Prelude on 'Rhosymedre'*
Ralph Vaughan Williams (1872-1958)

A bell sounds. All who are able stand.

ENTRANCE HYMN 525 • *Aurelia*
Sung by all, standing.

THE ACCLAMATION

Ambrosian chant

Celebrant

Bless-ed be God: Father, Son, and Ho - ly Spi - rit.

People

And blessed be his kingdom, now and for ev - er. A - men.

GLORIA IN EXCELSIS *Hymnal S280*
Sung by all.

THE COLLECT OF THE DAY

Celebrant The Lord be with you.

People And also with you.

Celebrant Let us pray.

Keep, O Lord, your household the Church in your steadfast faith and love, that through your grace we may proclaim your truth with boldness, and minister your justice with compassion; for the sake of our Savior Jesus Christ, who lives and reigns with you and the Holy Spirit, one God, now and for ever. *Amen.*

All are seated.

THE FIRST LESSON *Ezekiel 17:22-24*

Thus says the Lord God: I myself will take a sprig from the lofty top of a cedar; I will set it out. I will break off a tender one from the topmost of its young twigs; I myself will plant it on a high and lofty mountain. On the mountain height of Israel I will plant it, in order that it may produce boughs and bear fruit, and become a noble cedar. Under it every kind of bird will live; in the shade of its branches will nest winged creatures of every kind. All the trees of the field shall know that I am the Lord. I bring low the high tree, I make high the low tree; I dry up the green tree and make the dry tree flourish. I the Lord have spoken; I will accomplish it.

Reader The Word of the Lord.

People Thanks be to God.

All remain seated for the Psalm. The refrain is intoned, then repeated by the congregation and sung as indicated.

PSALM 92: 1-4,11-14

Plainsong, Mode III

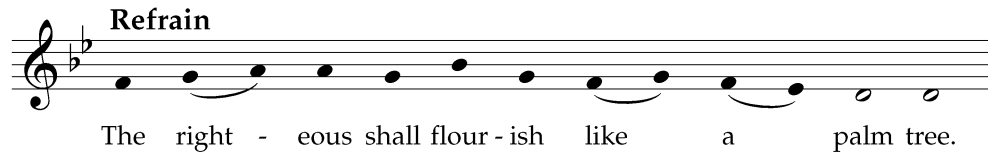
Refrain

The right - eous shall flour - ish like a palm tree.

It is a good thing to give thanks to the Lord, *
 and to sing praises to your Name, O Most High;
 To tell of your loving-kindness early in the morning *
 and of your faithfulness in the night season;
 On the psaltery, and on the lyre, *
 and to the melody of the harp. *Refrain*

For you have made me glad by your acts, O Lord; *
 and I shout for joy because of the works of your hands. *Refrain*

The righteous shall flourish like a palm tree, *
 and shall spread abroad like a cedar of Lebanon.
 Those who are planted in the house of the Lord *
 shall flourish in the courts of our God; *Refrain*



They shall still bear fruit in old age; *
 they shall be green and succulent;
 That they may show how upright the Lord is, *
 my Rock, in whom there is no fault. *Refrain*

THE SECOND LESSON 2 Corinthians 5:6-10-17

We are always confident; even though we know that while we are at home in the body we are away from the Lord~ for we walk by faith, not by sight. Yes, we do have confidence, and we would rather be away from the body and at home with the Lord. So whether we are at home or away, we make it our aim to please him. For all of us must appear before the judgment seat of Christ, so that each may receive recompense for what has been done in the body, whether good or evil. Therefore, knowing the fear of the Lord, we try to persuade others; but we ourselves are well known to God, and I hope that we are also well known to your consciences. We are not commending ourselves to you again, but giving you an opportunity to boast about us, so that you may be able to answer those who boast in outward appearance and not in the heart. For if we are beside ourselves, it is for God; if we are in our right mind, it is for you. For the love of Christ urges us on, because we are convinced that one has died for all; therefore all have died. And he died for all, so that those who live might live no longer for themselves, but for him who died and was raised for them. From now on, therefore, we regard no one from a human point of view; even though we once knew Christ from a human point of view, we know him no longer in that way. So if anyone is in Christ, there is a new creation: everything old has passed away; see, everything has become new!

Reader The Word of the Lord.
People Thanks be to God.

SEQUENCE HYMN 589 • *Walden*

Sung by all, standing.

THE HOLY GOSPEL *Mark 4:26-34*

Deacon The Holy Gospel of Our Lord Jesus Christ according to Mark.
People Glory to you, Lord Christ.

Jesus said, "The kingdom of God is as if someone would scatter seed on the ground, and would sleep and rise night and day, and the seed would sprout and grow, he does not know how. The earth produces of itself, first the stalk, then the head, then the full grain in the head. But when the grain is ripe, at once he goes in with his sickle, because the harvest has come." He also said, "With what can we compare the kingdom of God, or what parable will we use for it? It is like a mustard seed, which, when sown upon the ground, is the smallest of all the seeds on earth; yet when it is sown it grows up and becomes the greatest of all shrubs, and puts forth large branches, so that the birds of the air can make nests in its shade." With many such parables he spoke the word to them, as they were able to hear it; he did not speak to them except in parables, but he explained everything in private to his disciples.

Deacon The Gospel of the Lord.
People Praise to you, Lord Christ.

THE SERMON *The Rev. William Ogburn*

THE NICENE CREED *The Book of Common Prayer, p. 358*
Said by all, standing.

PARISH ANNOUNCEMENTS**THE PRAYERS OF THE PEOPLE**

In peace, we pray to you, Lord God.

For all people in their daily life and work;
For our families, friends, and neighbors, and for those who are alone.

For this community, the nation, and the world;
For all who work for justice, freedom, and peace.

For the just and proper use of your creation;
For the victims of hunger, fear, injustice, and oppression.

For all who are in danger, sorrow, or any kind of trouble;
For those who minister to the sick, the friendless, and the needy.

For the peace and unity of the Church of God;
For all who proclaim the Gospel, and all who seek the Truth.

For Justin, the Archbishop of Canterbury; Michael, our Presiding Bishop; Andrew, Allen and Mary, our Bishops; and for all bishops and other ministers;

For all who serve God in the Church.

For the special needs and concerns of this congregation.

(The People may add their own intercessions.)

Hear us, Lord;

For your mercy is great.

We thank you, Lord, for all the blessings of this life.

(The People may add their own intercessions.)

We will exalt you, O God our King;

And praise your Name for ever and ever.

We pray for all who have died, that they may have a place in your eternal kingdom.

(The People may add their own intercessions.)

Lord, let your loving-kindness be upon them;

Who put their trust in you.

We pray to you also for the forgiveness of our sins.

All say

Have mercy upon us, most merciful Father; in your compassion forgive us our sins, known and unknown, things done and left undone; and so uphold us by your Spirit that we may live and serve you in newness of life, to the honor and glory of your Name; through Jesus Christ our Lord. Amen.

The Celebrant concludes with an absolution.

THE PEACE

Celebrant The peace of the Lord be always with you.

People And also with you.

Then the Ministers and People greet each other in the name of the Lord. The Celebrant says an offertory sentence.

OFFERTORY ANTHEM*David J. Evans (b.1957)*

Be still, for the presence of the Lord, the Holy One is here;
 Come bow before Him now with reverence and fear.
 In Him no sin is found, we stand on holy ground;
 Be still, for the presence of the Lord, the Holy One is here.

Be still, for the glory of the Lord is shining all around;
 He burns with holy fire, with splendor He is crowned.
 How awesome is the sight, our radiant King of light!
 Be still, for the glory of the Lord is shining all around.

Be still, for the power of the Lord is moving in this place;
 He comes to cleanse and heal, to minister His grace,
 No work too hard for Him, in faith receive from Him;
 Be still, for the power of the Lord is moving in this place.

OFFERTORY HYMN · *Lift Every Voice and Sing II 206**Sung by all, standing.***THE GREAT THANKSGIVING** *Eucharistic Prayer A, The Book of Common Prayer, page 361*

The musical notation consists of four staves, each with a treble clef and a key signature of one flat (B-flat). The lyrics are as follows:

Celebrant *People*
 The Lord be with you. And al - so with you.

Celebrant *People*
 Lift up your hearts. We lift them to the Lord.

Celebrant
 Let us give thanks to the Lord our God.

People
 It is right to give him thanks and praise.

The Celebrant continues

It is right, and a good and joyful thing, always and everywhere to give thanks to you, Father Almighty, Creator of heaven and earth. For you are the source of light and life; you made us in your image, and called us to new life in Jesus Christ our Lord. Therefore we praise you, joining our voices with Angels and Archangels and with all the company of heaven, who for ever sing this hymn to proclaim the glory of your Name.

SANCTUS & BENEDICTUS *Hymnal S129**Sung by all.*

The Celebrant continues. Midway through the Eucharistic Prayer, the Celebrant says
Therefore, we proclaim the mystery of faith;

Celebrant and People
Christ has died.
Christ is risen.
Christ will come again.

The Celebrant concludes
All this we ask through your Son Jesus Christ. By him, and with him, and in him, in the unity of the Holy Spirit all honor and glory is yours, Almighty Father, now and for ever. *AMEN.*

THE LORD'S PRAYER *Hymnal S149*
Sung by all, standing.

THE BREAKING OF THE BREAD
The Celebrant breaks the bread.

FRACTION ANTHEM *Wonder, Love, and Praise 876*
Sung by all.

This is the Lord's Table. All are encouraged to come forward at this time. Gluten free wafers are available from the Priest on the pulpit side of the altar. If you are not baptized, or do not wish to receive, you are encouraged to come forward for a blessing. Signal this by crossing your arms across your chest.

COMMUNION MOTET
Alan Bullard (b.1947)

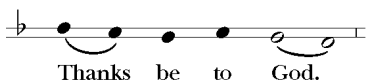
Bread of the world, in mercy broken,
Wine of the soul, in mercy shed,
by whom the words of life were spoken,
and in whose death our sins are dead:
look on the heart by sorrow broken,
look on the tears by sinners shed;
and be thy feast to us the token
that by thy grace our souls are fed.

POSTCOMMUNION HYMN 302 · *Rendez a Dieu**Sung by all, standing.***THE SENDING FORTH OF EUCHARISTIC VISITORS***On Sundays when the sacrament is brought to the sick, the Deacon says to the Eucharistic Visitor*

<i>Deacon</i>	In the name of this congregation I send you forth bearing these holy gifts, that our absent sister/ brother, to whom you go, may share with us in the communion of Christ's body and blood.
<i>People</i>	We who are many are one body, because we all share one bread, one cup.

POSTCOMMUNION PRAYER*Said by all.*

Eternal God, heavenly Father,
 you have graciously accepted us as living members
 of your Son our Savior Jesus Christ,
 and you have fed us with spiritual food
 in the Sacrament of his Body and Blood.
 Send us now into the world in peace,
 and grant us strength and courage
 to love and serve you
 with gladness and singleness of heart;
 through Christ our Lord. Amen.

THE BLESSING & DISMISSAL*The Celebrant sings the Blessing and the Deacon dismisses the People.**People***POSTLUDE *Solemn Procession****Thomas Pavlechko (b.1962)*

A brief service of prayer for healing follows shortly at the votive icon. All are welcome to receive prayer for healing for yourself or for loved ones.

Today's flowers are given to the glory of God and in loving memory of Duane Horton by Robert Hersee.

SUNDAY JUNE 17 *Proper 6*

Summer Schedule Begins

- 8:00am Said Eucharist, Rite I
- 10:30am Choral Eucharist, Rite II
- 11:45am Service of Healing
- 12:00pm Parish Picnic *School Playground*
- 4:00pm AlAnon *Laughlin Hall*

MONDAY JUNE 18

- 6:15pm Holy Eucharist *Chapel*

TUESDAY JUNE 19

- 6:15pm Holy Eucharist *Chapel*
- 7:00pm Centering Prayer *Laughlin Hall*
- 7:15pm A.A. *School Auditorium*

WEDNESDAY JUNE 20

- 6:15pm Holy Eucharist *Chapel*
- 7:00pm Vestry Meeting *School Library*
- 7:15pm A.A. *School Auditorium*

THURSDAY JUNE 21

- 3:30pm Yoga *Laughlin Hall*
- 6:15pm Holy Eucharist, *Chapel*
- 7:00pm Friends of Shelly *Laughlin Hall*

FRIDAY JUNE 22

- 9:30am Ones and Twos Group *Laughlin Hall*
- 12:15pm Holy Eucharist *Chapel*
- 8:00pm A.A. *Laughlin Hall*

SATURDAY JUNE 23

NO OUTREACH PROGRAMS TODAY

- 11:00am We Are Family Picnic *School Playground*
- 2:00pm Paul Lane Funeral

SUNDAY JUNE 24 *Proper 7*

- 8:00am Said Eucharist, Rite I
- 10:30am Choral Eucharist, Rite II
- 11:45am Service of Healing
- 4:00pm Pride Evensong & Reception *Church & School Playground*

Parish Announcements

Be A Part of the Conversation

Keep up to date on what's happening at St. Luke's. Sign up for our weekly e-blasts and quarterly Gazette on our website: www.stlukeinthefields.org. And don't forget to "Like" us on Facebook!

New to St. Luke's?

We're glad you're here! Please join us at coffee hours for conversation, to ask questions, and an opportunity to meet some clergy and vestry members.

Paul Lane Burial and Holy Eucharist

Saturday, June 23rd at 2pm.

A reception will follow.

Summer Worship Schedule begins today

Sunday services will be at 8am and 10:30am throughout the summer until Sunday, September 9.

St. Luke's Summer Volunteer Choir

Sundays during the summer; rehearsal at 9:15am

The St. Luke's Summer Choir will sing during the 10:30 am summer service through September 9. All are invited to join! The ability to sing on pitch and a willingness to learn is all that is required, though the ability to read music is a plus. Rehearsals will be on Sundays beginning at 9:15 a.m. in the choir loft. Please contact Amina Syedullah at the parish office if you are interested: asyedullah@stlukeinthefields.org | 212.924.0562. You may also come to the rehearsals and sign up there.

Parish Picnic

Today – Father's Day

Our Parish Picnic will be at 12noon following the 10:30am service. Join us for fellowship and food!

Pride Evensong

PRIDE Evensong will begin at 4 pm on Sunday, June 24. The Rev. Dr. Mary Foulke will be the preacher. A reception will follow the service. To volunteer for the reception, please contact Fr. William Ogburn: wogburn@stlukeinthefields.org | 212.924.9327.

Volunteers Needed!

The Parish Life Committee needs more volunteers for the Parish Picnic and Pride Reception. If you would like to help, please speak with the Chair of Parish Life, Garth Wingfield garthwing@gmail.com or contact Fr William

Ogburn wogburn@stlukeinthefields.org | 212.924.9327. Thank you.

Flower Arranging 101

Saturdays, July 14 and August 11 at 10:30am in Laughlin Hall

Flowers 101 returns this summer! Learn how our beautiful altar flowers are arranged with Flower Guild head Donald Conrad. You will also get to arrange your own flowers and learn tricks of the trade. There is a fee of \$20 for the class to cover costs of supplies and flowers. We will accept cards or cash the day of class **but make your reservation now**. This class is popular and sells out fast: sign up on our website at www.stlukethefields.org or call 212.924.0562.

Summer Family Events * Friends always welcome

Thursday, July 26, 6:00-8:00 p.m.

Meet on school playground.

Pizza, games & childcare for children.

"Parents Night Out" at Harwood on Hudson
430 Hudson Street

RSVP: ggore@stlukeinthefields.org

Thursday, August 30, 6:00-8:00 p.m.

Meet on school playground.

Potluck BBQ & games for all.

Sprinklers will be on!

RSVP: ggore@stlukeinthefields.org

2018 Financial Pledges

Please try and keep 2018 pledges up to date through the summer months. We rely on pledge income to help with timely payment of our bills. Thank you again to all who committed to a financial pledge for 2018.

20s30s Group

The 20s30s group will have a new schedule of activities beginning this fall. Stay tuned, or to learn more, contact Rachel Krause-Hurn at rachelhurn@gmail.com or 20s30s@stlukeinthefields.org.

Try out something new this summer!

The Acolyte Guild is a group of parishioners who take part in Sunday and holy day worship by carrying out various activities within the service. We're the ones in black cassocks, white surplices, and occasionally more colorful vestments. If you have been worshipping at St.

Parish Announcements (cont.)

Luke's for a bit, and have been wondering what it would like to be "up front" on Sunday morning, this is a great time to try it out. We are scheduling people for Sundays in June, July and August right now. (Remember that our Summer services are at 10:30 am starting on June 17th.) We promise to ease you into it, and to provide friendly training. If you want to sign up, or even if you are curious but hesitant, please email saintlukeacolytes@gmail.com. The Guild heads, Nicole Hanley and Mary O'Shaughnessy, will be happy to talk it over with you.

Join St. Luke's on a Parish Pilgrimage

October 26th – November 3rd, 2018

There are still spots available! Please contact Fr. Ogburn right away if you are interested.

The Church of Saint Luke in the Fields invites you on a pilgrimage to England to explore our rich Anglican heritage. Worship with us daily in some of England's most beautiful Cathedrals and sacred sites. Explore university cities, castles, and the English countryside. Most importantly, deepen your faith by traveling as a pilgrim to sites made holy by centuries of prayer. For itinerary and details contact Fr. Ogburn at wogburn@stlukeinthefields.org / 212.924.9327 or go to our website: <https://stlukeinthefields.org/learn-grow/pilgrimage-to-canterbury/>

Baptisms

Please contact Mo. Stacey to arrange baptism for your children: cstacey@stlukeinthefields.org. Future baptism dates are:

Sunday, July 22 (Ordinary Time)

Sunday, November 4, 2018 (All Saints' Sunday)

Sunday, January 13, 2019 (The Baptism of Our Lord)

Thrift Store Closed Temporarily

St. Luke's Thrift Shop is closed for renovations until Summer 2018. Please contact David Tai, *Church Business Manager* if you have any questions at 212.633.7817.

Offering Cards

There are small cards available at the rear of the church to place in the offering plate as a symbol if you customarily pledge online or by mail.

Ones & Twos Group at St Luke in the Fields

Fridays at 9:30 am in Laughlin Hall

This ministry is a support and information group for

young children and their parents and caregivers. Please contact Emma Noble (emmanoble50@hotmail.com) if you have any questions.

Children's Liturgy and Care

St. Luke's seeks to nurture and support children's participation in liturgy and prayer. Children are always welcome in worship, and childcare is available for infants through age six in the JK classroom. Please ask an usher for directions. *If your child is sick, we ask that you do not bring your child into the nursery.* For more information please contact Mo. Gore at ggore@stlukeinthefields.org.

Donations For Outreach

Currently, the pop up shop needs clothing for all seasons, travel size deodorant, toothbrushes and toothpaste, as well as socks, underwear, large size jeans, oversized T-shirts, and warm jackets. As transportation is crucial, we always need R/T (\$5.50) Metrocards to get youth safely to their next destination and to help them access lifesaving social services. Additionally, we accept non-perishable food items for the St. Clement's Food Pantry. Baskets are placed in the back of the church to accept your kind donations.

Ushers needed for 9:15 and 11:15 services

The Ushers Guild is seeking additional ushers who can serve at either 9:15 or 11:15 services. You only need to commit to ushering once every one to two months, and you get to choose the Sundays you're available. Training and mentoring is provided. For more information, or to schedule a 10-minute training, contact Steve Novak at saintlukeushers@gmail.com.

Sacraments of Healing and Reconciliation

There is a Service of Healing that follows the 11:15am Eucharist Sunday mornings (10:30am during the summer) at the icon and votive of the Blessed Virgin Mary. If you are worshiping at other services and wish to receive prayers and the laying on of hands for yourself or on behalf of a loved one, please know that the sacrament of healing—as with the sacrament of reconciliation—is always available by request from the clergy.

Vestry On-Call

To address any concern or question you may have about St. Luke's parish or ministry, two Vestry members are on call each month. For June, they are Jared Spencer

Parish Announcements (cont.)

(917.747.0345) and Garth Wingfield (646.263.2338).

You can also reach the vestry on call at:

Vestry@stlukeinthefields.org

Sermons Online

Sermons are available in audio and print formats on the web at stlukeinthefields.org/sermons; hard copies are available at the rear of the church.

Flower Memorials

Please contact Amina 212.924.0562 | asyedullah@stlukeinthefields.org to request a Flower Memorial in celebration of a special event or in memory of those who have died. The suggested donation is \$200 per memorial to cover costs. Checks should be made payable to the Church of St. Luke in the Fields, with a memorandum "donation for flowers." Please check *first* with Amina to reserve a specific date for your commemoration.

Mid-Career Group

St. Luke's has launched an exciting new fellowship and social group, targeted for people who are mid-career! With a vision of strengthening relationships among existing St. Luke's members and constantly expanding St. Luke's evangelism to our friends, contacts, and the communities in which we live, The Mid-Career Group's future activities might include special events / exhibitions, drinks, fellowship in members' homes, dinners, volunteering for one of St. Luke's outreach programs, and other activities.

Inaugural Dinner

Thursday, July 26 7 pm at the Harvard Club

The inaugural event will be a special four-course dinner with wine service at the Harvard Club of New York City (27 W 44th St). Those interested in attending are asked to also consider inviting a friend who is not yet a member of St. Luke's but who may be open to learning more about St. Luke's and potentially attend services with us on Sundays. At the dinner we will facilitate prayer, fellowship, and conversation around brainstorming how we can collectively build out the Group's activities, outreach, and evangelism. The cost of the dinner is fully underwritten by an anonymous St. Luke's member and therefore is free to attendees and to the church. RSVPs must be confirmed in advance – limited to up to 36 spots, so please RSVP early! Jackets and ties suggested, but business casual or better is appropriate. To get more involved or to RSVP, please email The Mid-Career Group's convener Jacob E. Miles at midcareer@stlukeinthefields.org.

Friends of Shelly Group

Thursday evenings in Laughlin Hall at 7:00 pm

Friends of Shelly is a support group for Trans and Gender-non-binary persons. All ages are welcome! This drop-in group is open and free to all who need it. Trans (M-F & F-M) and Gender non-binary folks will all meet together for support and conversation. There is no interview or sign-up. It is a group designed to meet the needs of a large and growing community here in NYC. Friends of Shelly seeks to provide a supportive and caring network of friends and companions.

While this is non-religious group, we hope all who link with Friends of Shelly who are seeking spiritual nourishment and a religious community will find St. Luke's a warm and welcoming parish family. Please spread the word!

Pride Choral Evensong at St. Luke's Church

Sunday, June 24th at 4:00 pm*



Every year our annual Gay Pride Evensong packs the church with visitors from near and far - we are delighted to welcome all to our PRIDE Choral Evensong.

This celebrated service, which culminates Pride Week features the Choir of Saint Luke in the Fields. Preaching at Evensong, The Reverend Doctor Mary Foulke, Rector of St. Mary's Episcopal Church, Manhattanville

A reception will follow the service.

*Please note that we have changed the time of the Choral Evensong to 4:00 pm.

More Pride Events

SATURDAY, JUNE 23 | WE ARE FAMILY PICNIC FROM 11 AM TO 2 PM

Join us as we celebrate families together. This event is co-sponsored with Center Families; all families are welcome! From 11 am to 2 pm at St. Luke's Playground (corner of Hudson and Christopher Streets).

SUNDAY, JUNE 24 | PRIDE DAY

St. Luke's will be marching again with the Diocese of New York and many Episcopal churches, led by the LGBT Concerns Committee.

MARCH DETAILS

Check In Time: 3:00 pm; Section Number: 7; Order Number within the Section: 39; Formation Block: 17th Street between 7th and 8th Avenue.

For more information, visit our website: <http://bit.ly/PRIDE2018StLukes>

Pride T-Shirts

\$10 per shirt. Proceeds will go to support our Outreach programs

Pride T-shirts will be available beginning June 21st. You can purchase them online through our website (www.stlukeinthefields.org) or at the parish office. Shirts will also be available during coffee hours on Sunday June 24th. For more information, please contact Amina at the parish office: 212.924.0562 | asyedullah@stlukeinthefields.org



Christian Formation

The Formation Program at St. Luke's is designed to prepare adult parishioners for Baptism, Confirmation, Reception, or the Reaffirmation of Baptismal Vows at the Easter Vigil. It is a way for people to find their way "home" to St. Luke's, whether from another tradition, no tradition, or a life-time with the Episcopal Church. The program consists of three parts. The Discovery Series is open to anyone interested in the subject matter, and the latter two parts are for those who have completed the Discovery Series and wish to proceed as candidates to be presented to the Bishop at the Easter Vigil. All candidates are paired with a sponsor who will introduce them more deeply to the life and ministries of St. Luke's Church. Candidates are expected to attend all four sessions of the Discovery Series and to participate in all subsequent meetings of the program. Full participation in the liturgies of Holy Week is strongly encouraged.

For questions or more information, please contact Fr. William Ogburn at wogburn@stlukeinthefields.org or 212.924.9327

Music & Arts at St. Luke in the Fields Concert Series 2018-2019—Save the dates!

5 Thursdays at 8 p.m.

Each concert is preceded by a lecture at 7 p.m.

Tickets will go on sale in July

November 8

Giovanni Gabrieli - Sacrae Symphoniae (Sacred Symphonies)

Mass movements, motets and canzonas.

Choir of St. Luke in the Fields and the Washington Cornett and Sackbutt Ensemble.

December 6

A Baroque Christmas in Rome:

Alessandro Scarlatti - Messa per il Santissimo Natale and motets by Scarlatti and Carissimi

Choir of St. Luke in the Fields with Baroque in the Fields, an orchestra of period instruments.

January 24

The Three B's of the North German Baroque.

Cantatas and organ works by Johann Sebastian Bach, Dieterich Buxtehude, Nicolaus Bruhns.

Soloists from the Choir of St. Luke in the Fields, David Shuler, organist, and Baroque in the Fields.

February 28

The Splendor of the Spanish Renaissance.

Music by Spain's master composers of the 16th century including Victoria, Guerrero, Lobo and Morales.

Choir of St. Luke in the Fields.

April 4

Joseph Haydn - Stabat Mater.

Haydn's ethereal and rarely performed masterpiece.

Choir of St. Luke in the Fields with Baroque in the Fields orchestra

Outreach

Art & Acceptance at St. Luke's

Art & Acceptance is St. Luke's Saturday night drop-in program for homeless or marginally housed LGBTQ+ youth (16-24). Right now, over half of NYC's youth identify as LGBTQ+. Year-round on Saturdays, from 7:00 to 9:00 PM, we create a hospitable, harm-reduction, gender-diverse safe space. We provide dinner, art, writing, and dance, a free pop-up clothing and toiletries 'shop', health and legal services, and crisis support. We invite volunteers from the parish and anyone who is an ally to LGBTQ+ youth to help us create this space by donating money, time, or items. In-kind donations of new and gently used seasonal clothing, toiletries, shoes, and new underwear are welcomed.

The GO Project At St. Luke's

Our GO Project Summer is almost upon us! GO Project at St. Luke's serves students and their families who are the most at risk of academic failure early in their education, by partnering with under-resourced and academically-struggling public school students, and equipping them with the skills needed for future success. The students start in in Grades K-3 and we continue to work with them as they grow. St. Luke's School donates its space, and GO Project teaches 6 classes on Saturdays during the school year, and 10 during the Summer all week long, all funded by parishioners and neighbors like you. Through our year-round academic, enrichment and family support program, including translators in Spanish, Mandarin, and Cantonese, students are welcomed into a supportive community that fosters their growth. The program also includes nutritious meals for these needy families. GO conducts fulfilling trainings of volunteers as enrichment tutors, helping connect you to our larger community. We welcome and encourage your donations.

To learn more about donating your resources or time, please contact Volunteers@stlukeinthefields.org, or call Simone at 212-414-7442. You can also donate on St. Luke's website by selecting "GO Project" or "LGBTQA Youth" from the drop-down menu.

Food Pantry

St. Luke's collects non-perishable food items for the St. Clement's Food Pantry. Our donations provide food for over 500 people weekly: canned soups, fish, vegetables, beans, cereals, rice, pasta, and peanut butter. We are looking for volunteers to sort and pack the food once a week, after any Sunday service. For more information, contact Tina Johnson at Vatijo@twc.com.

St. Luke's Garden

Monday through Friday from 10:00 am to dusk.

Always dreamed of having a garden? You are invited to join the garden volunteers the 2nd Tuesday of the Month. Please contact Anna Rice-Yaffe, Director of Volunteers at annaluna@rcn.com.

Thrift Shop

The thrift shop is located in the basement of the Parish House. St. Luke's Thrift Shop will be closed beginning January 13th, for approximately six months during renovations—we plan on reopening by July 2018. Please contact Maureen Doyle, Church Business Manager if you have any questions at 212 633-7817.

For more information about any of our Outreach programs, please contact Father Reynolds at 212.633.2099 | breyolds@stlukeinthefields.org.

A Call to Donate to Our Outreach Programs

St. Luke's mission is service to our neighbor: the poor, the sick, the suffering. We believe that each member is called to reach out to people in need. ***Right now, we do this in two ways.*** The GO Project at St. Luke's serves low-income public school students facing serious difficulty at school, working with them and their families to share resources and skills. Art & Acceptance is St. Luke's Saturday night drop-in program for homeless LGBTQ+ youth 16-24, where we create a safe space, providing dinner, art, writing, & dance, clothing & toiletries, health and legal services, & crisis support.

These programs were built by parishioners and neighbors like you. You will find an envelope specific to St. Luke's Outreach in your pew. You can also give at stlukeinthefields.org/connect/giving, selecting Outreach. Questions? Email srichmond@stlukeinthefields.org or call Simone at 212-414-7442. Thank you for making this missional work possible.

Parish Life

Centering Prayer

Tuesdays 7pm Laughlin Hall

All are welcome. Take some time to open your heart to God's voice within for a gentle practice of prayer in silence. "Whenever you pray, go into your room and shut the door and pray to your Father who is in secret." *Matthew 6:6*. Contact Richard Kigel at 718.698.7514 | interiorsilence@gmail.com.

Liturgical Service Opportunities

If you are interested in serving on any of our guilds, please contact one of our guild heads.

Acolyte Training

Mary O'Shaughnessy & Nicole Hanley:
saintlukeacolytes@gmail.com

Youth Acolytes at the 9:15am service

Father Reynolds: 212.633.2099
| breynolds@stlukeinthefields.org.

Altar Guild

Robert McVey: 212.330.7114 | robertmcvey@earthli-nk.net
Sean Scheller: 917.647.9244 | sscheller@cp.org.

Lectors Guild

Terry di Paolo: tmdpny@gmail.com | 917.612.7237.

Eucharistic Minister

Mary O'Shaughnessy & Nicole Hanley:
saintlukeacolytes@gmail.com

Weekday Mass Assistant

Cindy Brome: cindy.brome@gmail.com | 917.723.5314.

Ushers

Steve Novak: saintlukeushers@gmail.com |
646.406.5548.

Flower Guild

Donald Conrad: Donald.Conrad@me.com |
646.884.3145.

Pastoral Ministries

Do You Need Pastoral Care?

Please let a clergy person know if you are having a hard time and need pastoral care. There are a variety of forms this care might take. For example, we can often arrange to visit you in the hospital or at home, we can have a Eucharistic Visitor bring you communion, we can offer a listening ear, and/or we can get you in touch with lay pastoral care givers in the parish. Please contact Fr. Ogburn at wogburn@stlukeinthefields.org or 212.924.9397. For pastoral emergencies on nights and weekends, please call the emergency pastoral beeper at 646.240.5740.

St. Luke's Online Intercessory Prayer Group

Members of the group receive weekly prayer lists online and join a ministry of keeping the concerns, celebrations, and hopes of Parishioners in their prayers. The group also gathers for occasional Quiet Days. To become a member of the group, or for Quiet Day information, please contact Janet Vetter at jev98@verizon.net or 212.924.9327.

Pastoral Care Network Meeting

The Pastoral Care Network provides care for parishioners in need through visiting, prayer, note writing, telephoning, and other forms of reaching out. It also provides a place of mutual support for all care-givers and seeks to empower parishioners to be present and helpful to people who are experiencing difficulty. Monthly meetings consist of 3 parts, each lasting about 20 minutes: 1) a review of pastoral needs in the parish and development of plans to address them; 2) a brief training to help develop participants' pastoral skills; and 3) a supportive check-in, where reflection and discussion on experiences in caregiving are invited. Please contact Fr. William Ogburn at wogburn@stlukeinthefields.org or 212.924.9397 for more information.

Parish Intercessions

Persons listed below are prayed for weekdays by name at the 6:15pm Eucharist and on other occasions throughout the week. Due to the large need, the list is kept to family, loved ones, and close friends of parishioners only; names remain on the list for one month (six months for chronic illness). An additional list, circulated electronically to the intercessory prayer group only, is maintained for private concerns and for a wider circle of concern that may include parish members' acquaintances, loved ones of close friends, etc. All of the names on the printed list and the electronic list are prayed for regularly by members of the Intercessory Prayer Group. Parish members are encouraged to incorporate this list into their own devotions. To add a name to either prayer list, to provide an update, to express a need for ongoing prayer beyond one month, or to have a name removed from the list, please e-mail prayerlist@stlukeinthefields.org or call Fr. William Ogburn at 212.924.9397.

Those Who Are Ill or in Need of Intercession

Those Who are Ill or in Need of Intercession

Agnes Abarrientos, *friend of Ryan Binongo*
 Gustavo Acosta, *brother of George*
 George and Lenny Acosta
 Jacqui Taylor & Isaac Basker
 Tod Bergman, *friend of Anahi Galante*
 Richard and Susan Bingler, *brother and sister-in-law of*
 Roger Bingler and Janet Vetter
 Roger Bingler & Janet Vetter
 Hank Bjorklund, *friend of John Ericson & Jainee McCarroll*
 Eleftherios "Teddy" Bonaros, *friend of John Carollo*
 David Bongiorni, *friend of Anahi Galante*
 Joe Borelli and Family
 Michael Bradley, *partner of Doug Blanchard*
 Hank Buckwalter, *friend of Sean Scheller*
 Dorothy Carey
 Catherine Carnevale, *aunt of Lenny Acosta*
 Jeffrey Caruso, *friend of Anahi Galante*
 Karen Cirillo and Annemarie Corradino, *sister and sister*
 in law of Richard Cirillo
 Cleve Crosby, *friend of Linda Mason*
 Toni Dalton, *friend of Jacqui Taylor Basker*
 Bernice Darrow, *friend of Michael Anderson*
 Barb Day, *mother of Chap*
 Clara De Carlo, *friend of Janet Vetter*
 Bob Dellacona
 Kathleen and Nicole DeMartini
 Avril Derrington, *friend of Fr William Ogburn*
 Charmaine & Jack Diehl, *sister and brother in law of*
 Dianne Weyers
 Ray and Michele Dupey, *friends of Anahi Galante*
 Constance Durant, *friend of Beryl Frankel*
 Tracy Dussman, *friend of Richard Falk*
 David Eastman

Those Who are Ill or in Need of Intercession (cont.)

Nancy Eisenberg & Family, *sister of Don Wright*
 Grace Fenner, *sister of Genny Smith*
 Debbie Fernandez, *friend of Julia Alberino*
 Jack Fernandez, *friend of Josh Dumas*
 Joe and Terri Fiore
 Arlene Fisher, *aunt of Michael Anderson*
 Diane Flower, *friend of Joy Sullivan*
 Jay Fore, *friend of Rob Strobel*
 Beryl Frankel
 Stephanie Frankel, *daughter-in-law of Beryl*
 Ruth French, *sister of Diane Weyers*
 Anahi Galante
 Ed Garthwaite, *cousin of Vince Chiuimento*
 Martha Geissinger & Monica Mayper
 Angelo Giardina, *friend of John Carollo*
 Martine and Pierre Godeau, *parents of Caroline Borderies*
 Aaron Goldsmith, *nephew of Joan Goodman*
 Michael Day & Dovidia Goodman, *son &*
 daughter-in-law of Kirk Hollingsworth
 Gigi Gould, *sister-in-law of Tina Johnson*
 Aceke Gowie, *son of Joan Murray*
 Troi Graves, *friend of Phyllis Jenkins*
 Irene Grimes, *sister of Richard Bentley*
 Rosemary (Rusty) Gutwillig, *friend of Monica Mayper*
 Joe Gustrin, *friend of Beryl Frankel*
 Peter David Hall, *friend of Deborah Harding*
 Blaise Hancock
 Thomas Hanley, *uncle of Nicole Hanley*
 Julia Harrison, *friend of Beryl Frankel*
 Lyn Hathaway, *sister of Patty Aakre*
 Jude Hayo, *friend of Anahi Galante*
 Sandy Hicks, *aunt of Rob Strobel*
 Kirk Hollingsworth

Those Who are Ill or in Need of Intercession (cont.)

Florence Holsipple, *friend of John Carollo*
 Ralf Hupe, *brother-in-law of Peg Murphy*
 Luci Jackson, *aunt of Chap Day*
 Emily and Nancy Kaiser
 Barbara Karsten
 Rev. Kat Katsanis-Semel & Family, *wife of Goldalee Katsanis-Semel*
 Laura & Ilias Katsanis, *parents & parents-in-law of Rev. Kat & Goldalee Katsanis-Semel*
 Keith Kelly, *husband of Michael Cudney*
 Kathleen Kennedy, *friend of Shelly Mayron*
 Sandi Kenney, *sister of Bobby Rough*
 Vicki de Klerk, *friend of Jacqui Taylor Basker*
 Nancy Lane & Family
 Kathy Laytos, *friend of Vince Chiumento*
 Adele Lerner, *friend of Stephen Novak*
 Jean Lloyd, *friend of Jacqui Taylor Basker*
 Joe Long, *friend of Manuel Garza*
 Noreen MacKay, *friend of Jacqui Taylor Basker*
 Michael Madore, *friend of Dan Connelly*
 Judy Maged, *friend of Anahi Galante*
 Ginny Manitta, *cousin of Frank Russo*
 Scott McAuley, *cousin of Michael Anderson*
 Max McGuire, *friend of Anahi Galante*
 Kenneth Miller, *friend of Manuel Garza*
 Willie Monroe, *nephew of Ann Monroe*
 Mary Moody, *mother of Eileen Guilfoyle and David Moody*
 Fr Tim Morehouse
 Danny Mullin, *friend of Peg Murphy*
 Linda & Rosalina Munoz, *mother & grandmother of Demetrio Munoz*
 Joan Murray
 Mary Murphy, *mother of Steve Murphy*
 Majed Neaimi, *friend of Jacqui Taylor Basker*
 Holly Nickerson, *friend of Jonathan Vantassel*
 Julie Noreen, *niece of Dianne Weyers*
 Mary Lou Noreen, *sister of Dianne Weyers*
 Adith M. Novak, *friend of Manuel Garza*
 Christina Poskrobko, *friend of Simon Carr*
 Laura Pottak, *friend of John Carollo*
 Helaine & Carol Powell, *friends of Janet Vetter*
 Bill Powers, *husband of Patsy*
 Fr. John Predmore, *friend of Jacqui Taylor Basker*
 Noreen Pryor, *friend of John Carollo*
 Bijan Qutub, *friend of Jacqui Taylor Basker*
 Rickey Ybarra Ragetti, *friend of John Carollo*
 Patty Rasado, *friend of John Carollo*

Those Who are Ill or in Need of Intercession (cont.)

Olivier Rochmann, *cousin of Caroline Borderies*
 Ira & Leona Ross, *uncle and aunt of Genny Smith*
 Jumana Sakkijha, *friend of Jacqui Taylor Basker*
 Beatriz Santos, *friend of Anahi Galante*
 Glenn Sather, *father of Andy & father-in-law of Kit Emory*
 David Schilling, *friend of Janet Vetter*
 Andrew Shear, *friend of Beryl Frankel*
 Hudson Shorter, *friend of Rob Strobel*
 Elizabeth Smyth, *mother of Tim Smyth*
 Eric Somers
 Robert Steeley, *friend of Manuel Garza*
 Amy Suek, *friend of Kevin Reilly*
 Matt Sullivan, *son of Joy Sullivan*
 Hank Techentin, *friend of John Bradley*
 Ola Mae & Adam Tharpe
 Peter Thomas, *friend of Jacqui Taylor Basker*
 Paul Tomzak
 Salvador Peter Tomas, *friend of Jacqui Taylor Basker*
 Marie Torrance, *cousin of Peg Murphy*
 Debra Tretinik, *friend of Don Wright*
 Michael Turner
 Pat Walker, *friend of Genny Smith*
 Steve Weiland, *friend of Kirk Hollingsworth*
 Harry Welsh, *friend of Bruce Fulton*
 Dianne Weyers

For the Elderly

Raymond Alberino, *uncle of Julia Alberino*
 Robert Anshlowar, *father of Jeff*
 Juan Aponte & Antonia Torres, *parents of Wilfredo*
 Andrew Bennachetti, *friend of Donny Taffurelli*
 Edel Bodamer, *aunt of Donny Taffurelli*
 Robert Buel, *friend of Michael Anderson*
 Antonio Centeno, Sr., *friend of John Carollo*
 Ersilia Cioffi, *mother of Tina*
 Jean Cistaro, *aunt of Vince*
 Angeles Dacanay, *grandmother of Demetrio Munoz*
 Angie Danisi, *friend of John Carollo*
 Alan & Marjorie Dean, *cousins of Beryl Frankel*
 Upendra Nath and Urmila Devi Dubey, *parents-in-law of Vince Chiumento*
 Helen Donahue, *friends of Vince Chiumento*
 Rosaline & Thomas Eghobamien, *parents of Aimua*
 Richard Gargiulo, *father of Diane Gargiulo*
 Martine Godeau, *mother of Caroline Borderies*
 Robert Groen, *friend of Alex Tooker*
 Trevor Hosang, *friend of Alex Tooker*

For the Elderly (cont.)

Vivian S. Howard, *mother of Alycia*
 Varina Johnson, *mother of Tina Johnson*
 Charles & Robert Keenan, *father & uncle of Charlie*
 Stafford Krause, *father of Drew Krause*
 Lorraine Lee, *friend of John Carollo*
 Lillian Lucchesi, *family friend of Donald Taffurelli*
 Virginia Mitro, *friend of John Carollo*
 Rosalina Munoz, *grandmother of Demetrio Munoz*
 Jacqueline Murphy-Zolno, *friend of John Carollo*
 Jerry Ohlsten, *friend of Don Wright*
 Agnes Ondrovic, *aunt of Mary O'Shaughnessy*
 Marie Onzo, *friend of John Carollo*
 Charity Paul
 Esther Petrozziello, *friend of Vince Chiumento*
 Jim Ramsey, *friend of Larry Mead*
 Adelaide Richter, *friend of Phyllis Jenkins*
 Emma Hamilton Rosado, *friend of John Carollo*
 Annette Rubenstein, *friend of John Carollo*
 Catherine & George Rusin, *aunt & uncle of Vince Chiumento*
 Lila Schmidt, *friend of Donny Taffurelli*
 Rose Scott, *mother-in-law of Michael S. Anderson*
 Martha Barry Smith, *mother of Ted Smith*
 Donald & Mary Taffurelli, *parents of Donny Taffurelli*
 Jadvyga Vaiciunas, *friend of Vince Chiumento*
 Victoria Luz Vale, *friend of Peg Murphy*
 Charlotte Weathersby, *friend of John Carollo*
 Gundel Zuelke, *friend of John Carollo*

For Those Who Have Recently Died

Edward Burrows, *friend of Donald Gerardi*
 Vickie Gardner Davis, *friend of Deborah Harding*
 Duane Horton, *husband of Robert Hersee*
 Elvia Mora Miles, *grandmother of Jacob*
 Stanley Simbonis

For Those Whose Memorial of Death Falls This Week

Michael Gibney, *partner of Ernest Hood*
 Thomas Montgomery, *friend of Richard Glavin*
 Kevin Ullman, *parishioner (2008)*
 Giacomo Poma, *cousin of John Carollo*

For Those in the Military

Sean Steven Bartlett, *nephew of Charles Keenan & John Bradley*
 Timothy Harrison, *son of Belinda Harrison and friend of Michael Anderson*

For Those Preparing for Marriage & Blessing of a Civil Marriage

Melissa Perry & Agustin Crespo-Nazario
 Matt Feldman & Nick Nikic
 John Michael Hemsley & Mary Katherine Rebentisch

In Thanksgiving**For Those Expecting the Birth or Adoption of a Child**

Anthony Mak & Charles Alvarez
 Rachel Krause-Hurn and Drew Krause
 Alka and Chandra Shekhar Gaur, *in-laws of Vince Chiumento*
 Frank and Melissa Poulos, *nephew and niece of Vince Chiumento*

For Seminarians and Those Preparing for Holy Orders & Other Ministries

Anahi Galante, Alex Herasimtschuk, The Rev. Julia Stroud, & Heidi Thorsen Oxford

Anglican Cycle of Prayer

The Church of the Province of Myanmar (Burma)

Diocesan Cycle of Prayer

Trinity Church, Fishkill

For Our Companions in Ministry

Tsongong Cathedral, the Diocese of Matlosane, South Africa; and the Church of St. Mary the Virgin, Primrose Hill, the Diocese of London

The Church of St. Luke in the Fields

487 Hudson Street
New York, NY 10014

Website: www.stlukeinthefields.org

Email: info@stlukeinthefields.org

Like our Facebook Page:

The Church of St. Luke in the Fields

Join our Facebook Group: "St. Luke in the Fields"

Telephone: 212.924.0562

Fax: 212.633.2098

Pastoral Emergencies: 646.240.5740

RECTOR

The Reverend Caroline Stacey

212.924.0562

cstacey@stlukeinthefields.org

MINISTRY & WORSHIP

The Reverend William L. Ogburn

Senior Associate

212.924.9327

wogburn@stlukeinthefields.org

The Reverend Bo Reynolds

Curate & School Chaplain

212.633.2099

breynolds@stlukeinthefields.org

The Reverend Gina Gore

Associate for Children and Family Ministries

212.924.0562

ggore@stlukeinthefields.org

David Shuler

Director of Music & Organist

212.633.2167

dshuler@stlukeinthefields.org

ASSISTING CLERGY

The Reverend Milton Gatch

The Reverend Thomas Miller

The Reverend Bill Paulsen

The Reverend Jay Wegman

ADMINISTRATION

Maureen Doyle, *Business & Finance Manager*

212.633.7817 ▪ mdoyle@stlukeinthefields.org

David Tai, *Business & Finance Manager-Elect*

212.924.0562 ▪ dtai@stlukeinthefields.org

Tony Serrano, *Facilities Manager*

212.924.3080 ▪ aserrano@stlukeinthefields.org

Kelsin Giron, *Facilities Supervisor*

212.924.5960 x133 ▪ kgiron@stlukeinthefields.org

Lynn Brewster, *Communication Manager*

212.647.1837 ▪ lbrewster@stlukeinthefields.org

Simone Richmond, *Development & Outreach Manager*

212.414.7442 ▪ srichmond@stlukeinthefields.org

Amina T. Syedullah, *Parish Office Administrator*

212.924.0562 ▪ asyedullah@stlukeinthefields.org

Rita McCarthy, *Thrift Shop Manager*

212.924.9364 ▪ thriftshop487@yahoo.com

Elissa Weiss, *Concert Series Assistant*

212.414.9419 ▪ music@stlukeinthefields.org

ST. LUKE'S SCHOOL

Bart Baldwin, *Head*

212.924.5960 ▪ www.stlukeschool.org

ST. LUKE'S VESTRY

William Robertson & Jared Spencer, *Wardens*

Terry di Paolo

Robert McGraw

Bruce Goerlich

Jack Spencer

Ben Jenkins

Savannah Stevenson, *Clerk*

Tina Johnson Hattan

Garth Wingfield

Richard Kigel

Non Voting

Ken Lee, *Treasurer*

Barbara Sievert, *Recording Secretary*

Email Contact: Vestry@stlukeinthefields.org